



Fitzroy House, Battersea, London, SW11

Asking Price £2,375,000, Leasehold

NAPIER WATT

T: 0207 935 0011

E: [enquiries@napierwatt.co.uk](mailto:enquiries@napierwatt.co.uk)

W: [napierwatt.co.uk](http://napierwatt.co.uk)

35 Berkeley Square, Mayfair, London, W1J 5BF







## Description

Stunning three-bedroom apartment with two balconies in a brand new development with leisure facilities. This spacious eighth floor (with lift) lateral property boasts parquet flooring and comfort cooling. The accommodation of 1,532sq ft comprises of a large open plan living room kitchen which leads to a balcony overlooking the communal gardens. The master bedroom also has a balcony facing the gardens, as well as a bath and shower in the en-suite. The second and third bedrooms are a good size and also have en-suite bathrooms. The apartment benefits further from a utility cupboard and guest cloakroom. This luxurious development has 24-hour concierge, indoor swimming pool, sauna, steam room and a residents' roof terrace.

3 Bedrooms : 3 Bathrooms : 2 Balconies : Guest W.C. : 24-Hour Concierge : Swimming Pool : Spa Facilities : Wandsworth Council Tax Band G : EPC Rating B.

## Key Features

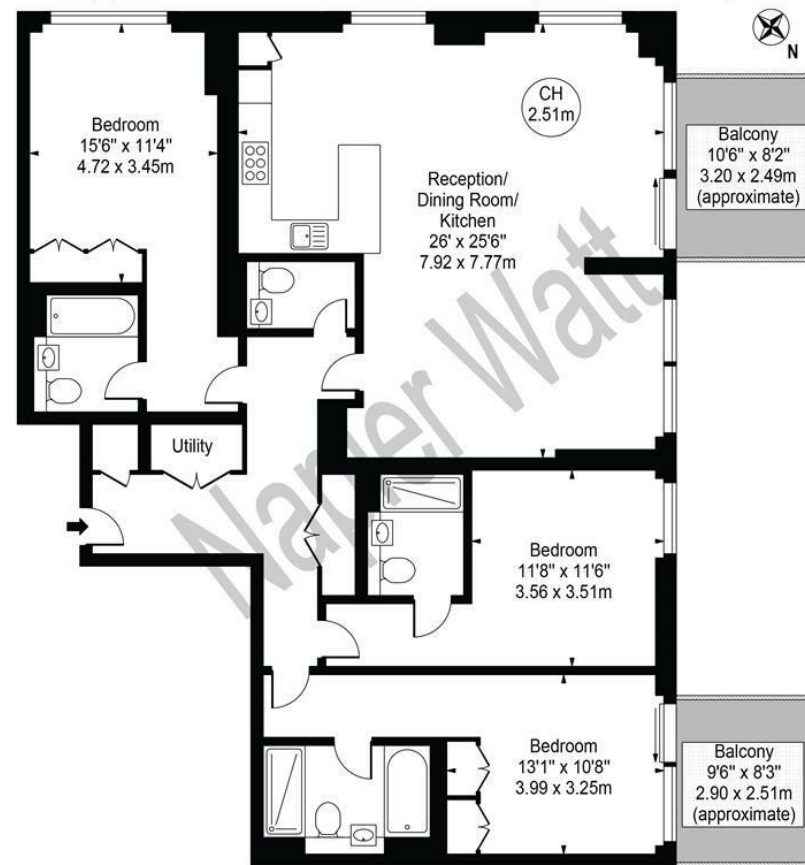
- 24-HOUR CONCIERGE
- SWIMMING POOL
- COMFORT COOLING
- COMMUNAL ROOF TERRACE
- PASSENGER LIFT
- SAUNA AND STEAM ROOM
- TWO PRIVATE BALCONIES

## Terms

Leasehold: 999 years from 1 January 2019  
 Service Charge : £4,300 per half year  
 Council Tax Band : Wandsworth Band G

## Fitzroy House

Approx. Gross Internal Area 1598 Sq Ft - 148.46 Sq M



### Eighth Floor

For Illustration Purposes Only - Not To Scale

This floor plan should be used as a general outline for guidance only and does not constitute in whole or in part an offer or contract. Any intending purchaser or lessee should satisfy themselves by inspection, searches, enquiries and full survey as to the correctness of each statement. Any areas, measurements or distances quoted are approximate and should not be used to value a property or be the basis of any sale or let.

IMPORTANT: We would inform prospective purchasers that these sales particulars have been prepared as a general guide only. A detailed survey has not been carried out, nor the services, appliances and fittings tested. Room sizes should not be relied upon for furnishing purposes and are approximate. If floor plans are included, they are for guidance only and illustration purposes only and may not be to scale. If there are any important matters likely to affect your decision to buy, please contact us before viewing the property.